

WILLOUGHBY PLAT NO. 18, A P.U.D.(r) (Willoughby Cay)

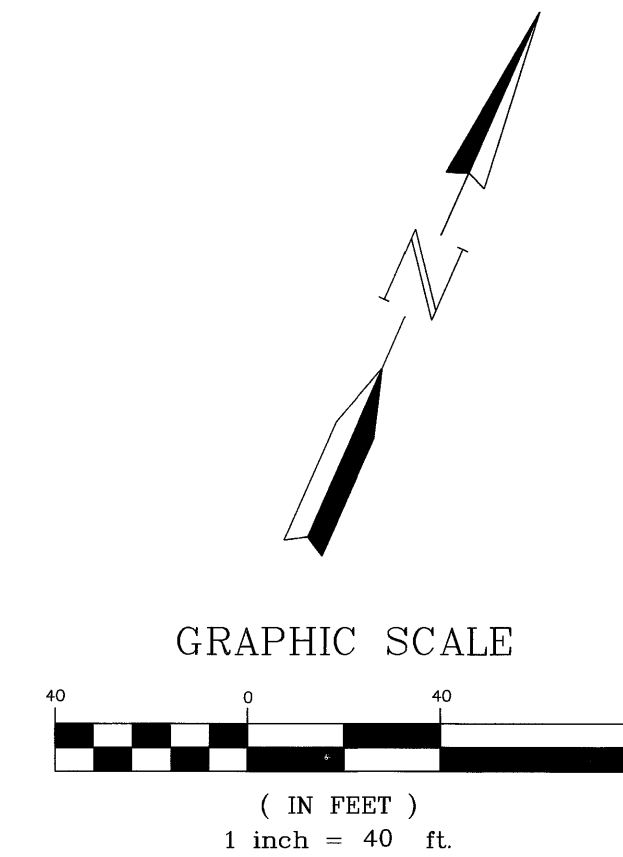
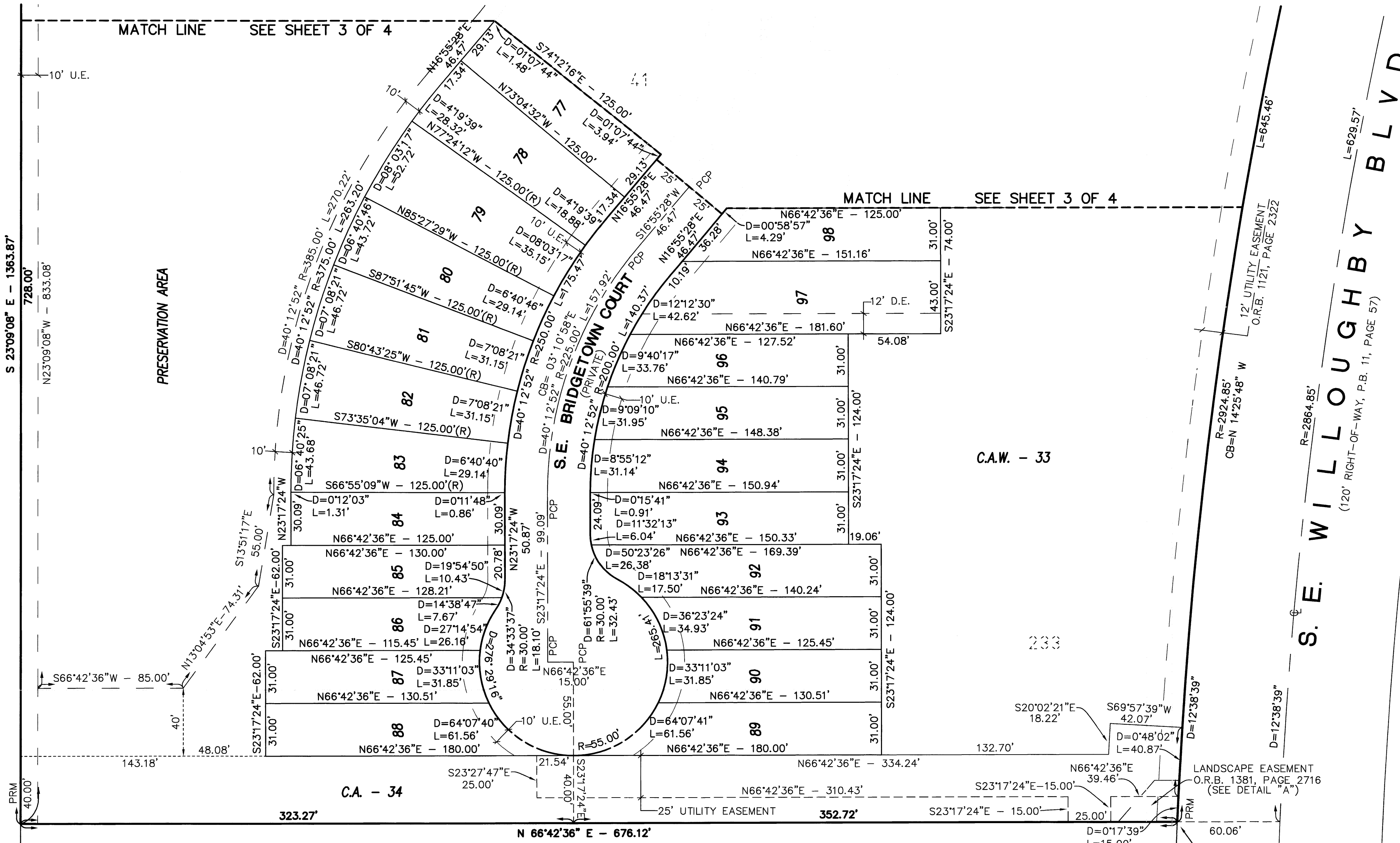
Being a parcel of land lying in the Hanson Grant, Martin County,
Florida and being a part of an abandoned portion of Stuart Farms
as recorded in Plat Book 1, Page 63, public records,
Martin County, Florida.

September, 2001

Plat Book 15
Page 22

SHEET INDEX

STUART FARMS
(PLAT BOOK 1, PAGE 63)
(PLAT BOOK 1, PAGE 63)
(ABANDONED ORB 778, PAGE 2246)

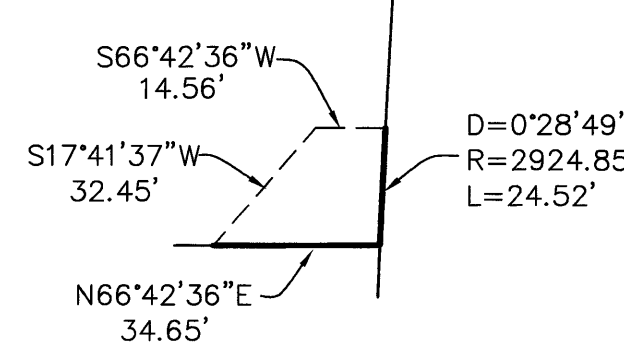


SURVEYOR'S NOTES

THIS PLAT, AS RECORDED IN ITS GRAPHIC FORM IS THE OFFICIAL DEPICTION OF THE SUBDIVIDED LANDS DESCRIBED HEREIN AND WILL IN NO CIRCUMSTANCES BE SUPPLANTED IN AUTHORITY BY ANY OTHER FORM OF THIS PLAT.

LEGEND	
•	= SET PERMANENT CONTROL POINT (PCP) PARKER KALON NAIL & WASHER LABELED "GCY LB 4108"
○	= SET 3/4" IRON PIPE WITH YELLOW CAP LABELED "GCY, INC. LB 4108"
■	= SET PERMANENT REFERENCE MONUMENT (PRM) 4"x4" CONCRETE MONUMENT WITH DISK LABELED "GCY INC. P.R.M. LB 4108, PSM 4864"
D	= DELTA (CENTRAL ANGLE)
L	= ARC LENGTH
R	= RADIUS
CB	= CHORD BEARING
—	= EASEMENT (PRIVATE)
C.A.	= COMMON AREA
C.A.W.	= COMMON AREA WATER
D.E.	= DRAINAGE EASEMENT (PRIVATE)
LB	= LICENSED BUSINESS
M.E.	= MAINTENANCE EASEMENT
P.C.	= POINT OF CURVATURE
P.R.C.	= POINT OF REVERSE CURVATURE
PSM	= PROFESSIONAL SURVEYOR AND MAPPER
P.T.	= POINT OF TANGENCY
P.U.D.	= PLANNED UNIT DEVELOPMENT
(R)	= RADIAL LINE
U.E.	= UTILITY EASEMENT

DETAIL "A"
LANDSCAPE EASEMENT
O.R.B. 1381, PAGE 2716



Job Number 01-1038-02-01
Licensed Business #4108

GCY
INCORPORATED
PROFESSIONAL SURVEYORS AND MAPPERS
CERTIFICATE OF AUTHORIZATION LB 4108

CORPORATE OFFICE: 4909 N. MONROE STREET, TALLAHASSEE, FL 32303
PALM CITY, FL 34991 (800) 386-1066

TALLAHASSEE OFFICE: 4909 N. MONROE STREET, TALLAHASSEE, FL 32303
(850) 536-8455